

CALL 811

Hopefully you already know that you need to call 811 at least 3 days prior to digging in your yard. But did you also know that you or your plumber should call 811 prior to clearing a blocked sewer line?



Columbia Gas is committed to providing safe, reliable and efficient natural gas service, and part of that commitment is ensuring all customers, contractors and plumbers follow safety guidelines when clearing a blocked sewer line.

Enclosed is some important information about our sewer line safety program and tips to reduce the potential for damage or injury when using mechanical plumbing tools.

COLUMBIA'S SEWER LINE SAFETY PROGRAM

As Columbia Gas continues with its enhanced focus on pipeline safety, the Company identified the need for a sewer line safety program to isolate and correct cross bore situations. Columbia Gas and its contractor will partner with local municipalities to inspect the sewer lines (sanitary and storm) and take any necessary action.

EMERGENCY NUMBERS

911 | 1-888-460-4332

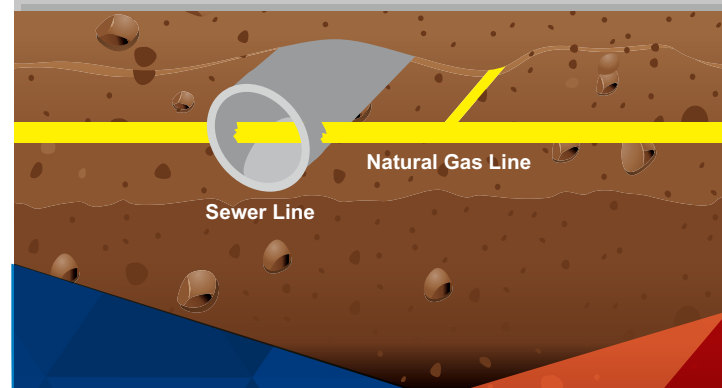
For more information, visit:
ColumbiaGasPA.com

This brochure should be used for educational purposes only. It is not intended to be an opinion, legal or otherwise, of NiSource Inc. or its subsidiaries.



SEWER LINE SAFETY

Columbia Gas[®]
of Pennsylvania
A NiSource Company
121 Champion Way
Canonsburg, PA 15317



SEWER LINE SAFETY

TIPS BEFORE USING MECHANICAL PLUMBING TOOLS

ColumbiaGasPA.com

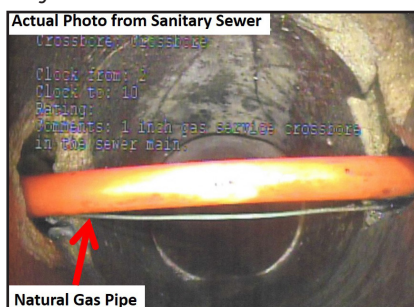


WHY THIS IS IMPORTANT

Many utilities use “trenchless technology” construction methods to install underground lines. Trenchless technology is the installation of pipelines and cables below the ground with minimal excavation. This proven construction practice provides an alternative to open trenching, and helps reduce road closures, minimizes restoration costs and allows for safe and efficient utility construction in established neighborhoods or urban areas.

Prior to any construction, utilities and contractors are required to call 811 and request the marking of utility lines in the area. Sewer lines are sometimes not marked or not marked correctly, leaving the potential for natural gas lines to be bored through the sewer lines (“cross bore”).

A cross bore can go undetected for months or even years. Eventually, if a sewer backup develops (as material accumulates or as tree roots grow into openings), an attempt to clear the blockage is made by a plumber or homeowner, often by using a mechanical rotary device. This practice can damage the utility line and create an unsafe situation allowing natural gas to migrate into homes and buildings. Anyone who uses mechanical plumbing tools needs to be aware of this potential safety hazard and take action to avoid accidents.











**SMELL GAS
ACT FAST**

If you suspect a gas line blockage of a sewer line, call Columbia Gas at **1-888-460-4332**. If a gas line has caused the blockage, Columbia Gas will make repairs to the line at no charge.

SAFETY TIPS

- Call 811 before you clear.
- If the markings from existing underground utility lines cross the path of the sewer line, it may be a cross bore that is causing the blockage.

What do those colors mean? The color of the paint stake or other marker indicates what's below:			
	Proposed Excavation		Communications/Cables TV
	Temporary Survey Markings		Water
	Electric		Reclaimed Water
	Gas/Oil		Sewer & Drain Lines

IF YOU SUSPECT/DISCOVER A CROSS BORE

- Immediately contact and get help from the utility operator(s) that may be involved.
- DO NOT proceed with the sewer cleaning until the utility is relocated.

IDENTIFYING A LEAK



LISTEN

Listen for a hissing or blowing sound.



SMELL

Smell the distinctive odor similar to “rotten eggs.”



LOOK

Look for blowing dirt and dead or dying vegetation.

IF YOU SUSPECT A LEAK



STOP
what you're
doing



LEAVE
the area
immediately



CALL
911 and
Columbia Gas

If you smell a rotten-egg-like odor, you may have a natural gas leak. Follow these rules to keep you and your family safe.

WHAT TO DO:

Leave the area immediately. Turn off and abandon any motorized equipment you might be using.

From a safe location, away from the building, call 911 and Columbia Gas at **1-888-460-4332**.

Wait for our service crew to arrive.

WHAT NOT TO DO:

Don't light a match or candle, or operate anything that could cause a spark, including cell phones, lights, appliances, doorbells, flashlights, power tools, etc.

Don't open the windows and doors in an attempt to ventilate the building.

Don't try to find the leak yourself or operate pipeline valves.