

When planning for the location of your new natural gas meter, please note:

**Meters and meter settings** must maintain a clearance of:

- 6" above finished grade to bottom of meter
- 6" on sides and top of meter
- 36" in front of meter

**Meters and meter settings** must be:

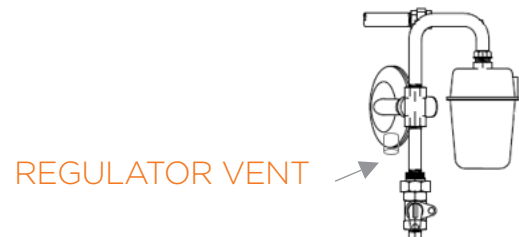
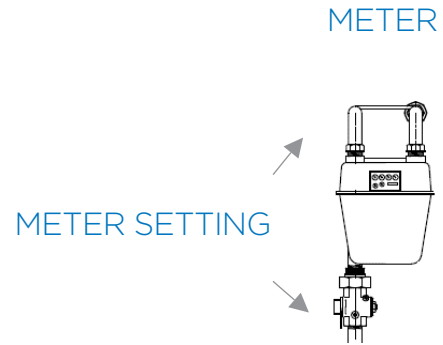
- Installed in a ventilated, readily accessible location
- Protected from corrosion and damage

**Meters, meter settings, and regulators** must be:

- A minimum of 10 feet away from generators

**Regulator vents** must be a minimum of:

- **12" above grade** (in areas where flooding may occur, required vent height may be in excess of 12" above grade).
- **3 feet radially from:** an electric meter, electric panel, electric outlet, electric pedestal, pedestal, electrical equipment disconnect, or pad mounted transformer.
- **3 feet radially from, and NOT below any first floor opening into a building, such as:** a door, window or other gravity air openings (including clothes dryer exhaust terminals and appliance air intakes)
- **3 feet radially from, and NOT directly below any rotating electrical equipment** (e.g., an air conditioner)
- **10 feet radially from, and NOT below** any forced air inlet or power intake.



Please also consider the harsh winter months during the decision process. Natural gas meters and equipment are designed to withstand winter weather conditions, including heavy snow and ice. However, hard-packed snow, icicles falling from your eaves or water dripping from your roof and freezing on your meter can create a safety hazard. Consider steering clear of eaves and areas where snow accumulates.