

Natural Gas Meter Placement Guide

When planning for the location of your new natural gas meter, please note:

Meters and meter settings must be a minimum of **3 feet** from:

- ✔ Any source of heat (furnace, incinerators, etc.)
- ✔ Any source of ignition (electric meters, panels, etc.)
- ✔ Vent or exhaust terminations (heating systems, dryers, central vacuum, etc.)

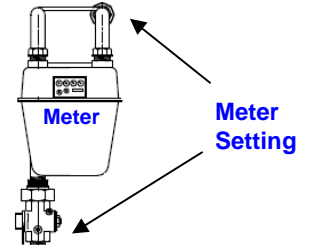
Meters and meter settings must be a minimum of **5 feet away** from:

- ✔ Central A/C compressor

Meters and meter settings must be a minimum of **8 feet away** from:

- ✔ Generators

Meters and meter settings must be a minimum of **6" above** finish grade



Regulator vents must be a minimum of:

- ✔ **3 feet left or right of and/or one foot above** any atmospheric opening such as a door, window, etc.
- ✔ **5 feet left or right of and/or two feet above** an air conditioning unit.
- ✔ **8 feet left or right of and/or three feet above** any generator.
- ✔ **10 feet left or right of and/or 3 feet above** any forced air inlet or power intake.

